

Instrumentation Solutions

MESC Compliant Modular Mounting Systems

aerospace
climate control
electromechanical
filtration
fluid & gas handling
hydraulics
pneumatics
process control
sealing & shielding



ENGINEERING YOUR SUCCESS.

MESC Compliant Modular Mounting Systems

- Page 3** Introduction
- Page 4** Overview
- Page 5** Features
- Page 6** Part Numbering
- Page 8** DIN 19213 Manifolds
- Page 10** DIN 61518 Manifolds
- Page 12** Enclosure and Protective Shade
- Page 13** Back Plates
- Page 14** Seal Pot and Purge Blocks
- Page 15** Heating Blocks
- Page 16** Filling Connector and Port Protector
- Page 17** Quote Questionnaire
- Page 18** Additional Products

⚠ WARNING

FAILURE, IMPROPER SELECTION OR IMPROPER USE OF THE PRODUCTS AND/OR SYSTEMS DESCRIBED HEREIN OR RELATED ITEMS CAN CAUSE DEATH, PERSONAL INJURY AND PROPERTY DAMAGE.

This document and other information from Parker Hannifin Corporation, its subsidiaries or its authorized distributors provide product and/or system options for further investigation by users having technical expertise. It is important that you analyze all aspects of your application and review the information concerning the product or system in the current product catalog. Due to the variety of operating conditions and applications for these products or systems, the user, through its own analysis and testing, is solely responsible for making the final selection of the products and systems and assuring that all performance, safety and warning requirements of the application are met.

The products described herein, including without limitation, product features, specifications, designs, availability and pricing, are subject to change by Parker Hannifin Corporation and its subsidiaries at any time without notice.

Offer of Sale

The items described in this document are available for sale by Parker Hannifin Corporation, its subsidiaries or its authorized distributors. Any sale contract entered into by Parker will be governed by the provisions stated in Parker's standard terms and conditions of sale (copy available upon request).

Welcome to the MESC Compliant Modular Mounting Instrumentation Systems from Parker Hannifin.

What is MESC?

Material and Equipment Standards and Code (MESC) is a materials standardisation system created by Shell to allow buyers to purchase standardised materials all over the world. It was created in 1932 for internal use, but was later licensed to any company who wished to pay for it.

With a single 10 digit code materials can be purchased independent of the manufacturer or brand.

In this catalogue

This catalogue details design innovation - based around Shell's MESC standardisation system - that Parker believes will save significant engineering and installation time and costs for users of process fluid instrumentation.

The following pages detail a modular range of manifolds and accessories for small-bore instrumentation requirements that allow anyone to configure and order a complete integrated manifold and mounting solution for a process application in a few minutes.

Once you have made your selection, Parker assembles and delivers the finished integrated manifold to you - ready for immediate installation!

The benefits of this approach are wide ranging, and include:

- Being able to source all your instrument manifold mounting and protection needs from a single supplier and a proven inter-compatible range of components
- Eliminating on-site assembly time, and last-minute compatibility problems that can arise when using components from different suppliers
- Using an advanced flow path design that provides close coupling for high measurement integrity and avoidance of gauge line errors
- Gaining access to a connection system designed for ease of installation and subsequent lifecycle maintenance
- Manufacturing quality based on what Parker believes is the best materials sourcing and quality control systems in the industry today

The manifold-related products detailed in this catalogue stem from Parker's Enterprise Framework Agreement with Shell as a single source supplier for the provision of instrumentation valves, manifolds, process-to-instrument valves, fittings, tubing, protective enclosures and related products. This agreement provided the platform for Parker to invest and produce this manifold range (and further

instrument components detailed elsewhere), for use by Shell and its affiliates - as well as any other process instrumentation users interested in the benefits of modular instrumentation technology.

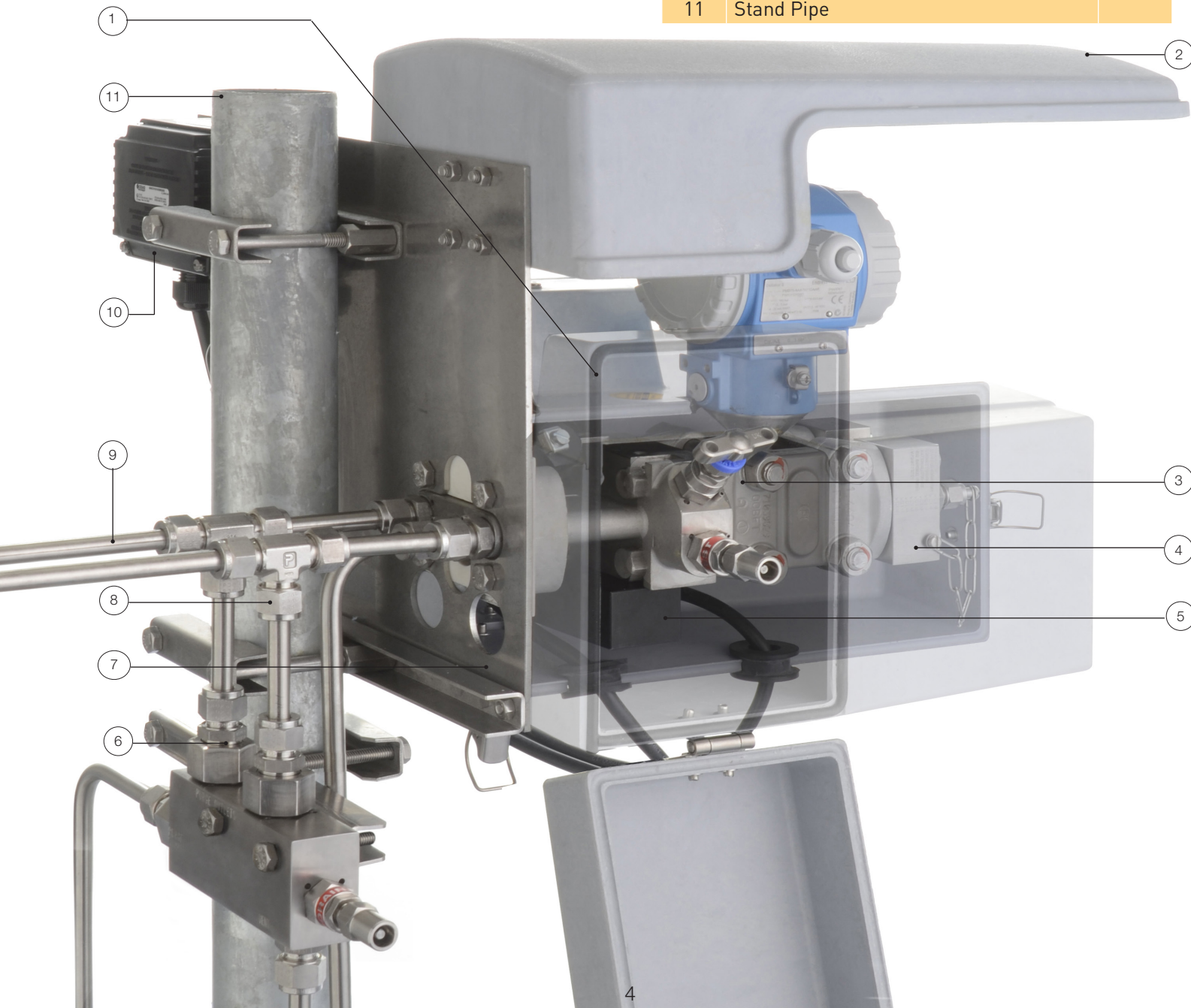


Need any help?

If you would like to discuss the benefits of modular instrumentation systems for your plant, or would like help in configuring a manifold solution, Parker welcomes your contact - see the back page of this brochure to find your local office.

Fully assembled systems can be supplied based on your specific project or site requirements. It can be fitted with various pressure or flow transmitters and can manage the harsh environmental and process conditions. Please contact us with your requirements.

| Item | Description | Page |
|------|----------------------------------|------|
| 1 | Parker Enclosure | 12 |
| 2 | Parker Sun Shade | 12 |
| 3 | Parker Manifold | 8-11 |
| 4 | Parker Filling Connector | 16 |
| 5 | Parker Electrical Heater Block | 15 |
| 6 | Parker Vent & Purge Block | 14 |
| 7 | Parker Back Plate | 13 |
| 8 | Parker A-LOK® - Cat 4190-FMTG | |
| 9 | Parker Grade Tube - Cat 4190-PGT | |
| 10 | Terminal Box | |
| 11 | Stand Pipe | |



Compression Fitting Options

Products featured within this catalogue can be specified with two options of compression fittings



- Two ferrule design
- Precision machined
- Burnished cones for enhanced sealing
- Suparcase® back ferrule provides superior grip and anti corrosion properties
- Silver plated nut ensures no gauling



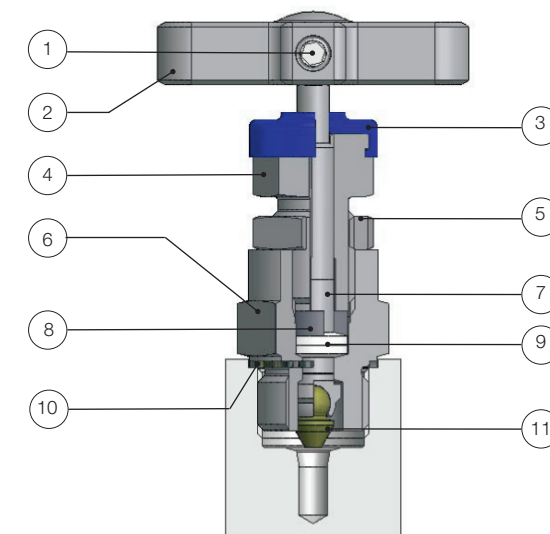
- Suparcase® single ferrule providing superior grip and anti corrosion properties
- Molybdenum disulfide coated nut for enhanced lubrication
- Precision machined
- Vibration resistant

H Series Manifold Features

- Rolled spindle operating threads for low torque operation
- Gland packing in PTFE or Graphite for bubble tight sealing
- Colour coded close contact dust cap and function label for easy identification
- Available in 316L, and other corrosion resistant alloys on application
- T-bar operating handle for low torque function
- Self centering crimped needle tip for bubble tight seat sealing

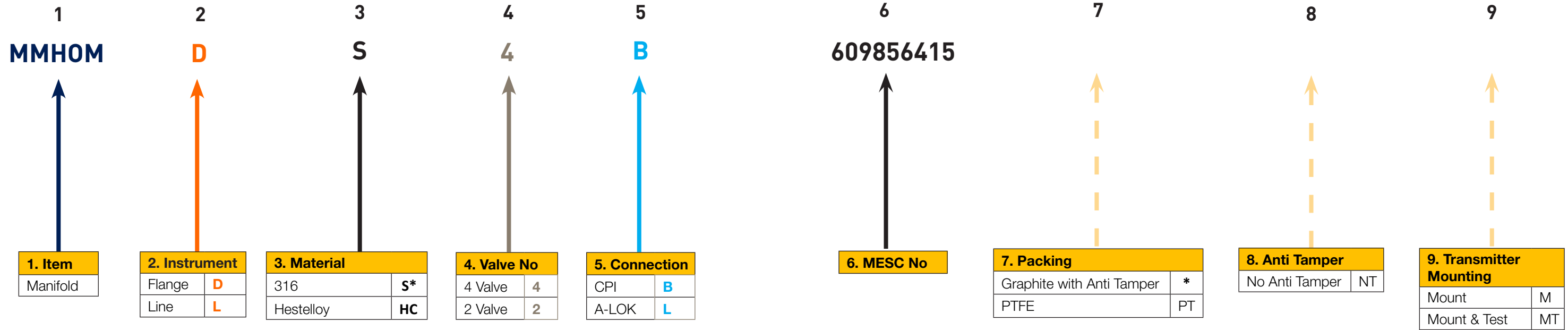
- Close contact dust cap for operating thread protection
- Back seated spindle for blow out prevention and minimum atmospheric leakage
- Adjustable gland with easy access
- Gland lock nut for vibration protection
- Pressure rating up to 6,000 psig (414 barg)
- Temperature rating -54°C to -538°C (-65°F to 1000°F)
- Heat code trace certification available

For safe, reliable and repeatable performance



| Item | Description |
|------|----------------------------|
| 1 | Positive handle retention |
| 2 | 'T' bar |
| 3 | Dust Cap |
| 4 | Gland Packing Adjuster |
| 5 | Gland Adjuster Lock Nut |
| 6 | Valve Bonnet |
| 7 | Anti Blowout Spindle |
| 8 | Thrust Bush |
| 9 | Gland Packing (Adjustable) |
| 10 | Bonnet/Body Washer |
| 11 | Spindle Tip |

Part Numbering

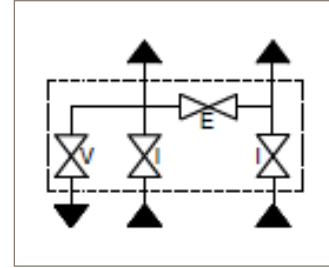
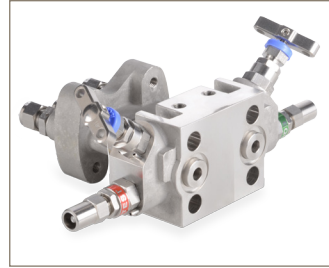


* Standard offering

Part Numbering

4 Valve Manifold - Type A - double isolate/equalise/vent block for general applications

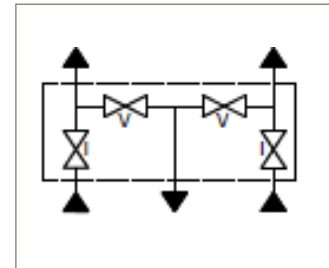
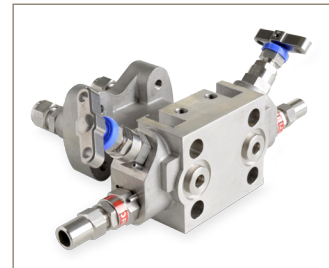
- DIN 19213 PT2 1980 instrument connections
- Dual isolate, equalise and vent valves
- G1/4" BSPP female port supplied with either 1/2" or 3/8" OD or 10mm OD A-LOK®/CPI™ compression fittings fitted and pinned
- PTFE seal kit included as standard
- Graphite valve packing as standard



| Type | MESC | Process/Vent | A-LOK® Part Number | CPI™ Part Number |
|------|--------------|--------------|---------------------|---------------------|
| A | 609856.205.1 | 10 mm | MMHOMDS4L6098562051 | MMHOMDS4B6098562051 |
| A | 609856.207.1 | 3/8" | MMHOMDS4L6098562071 | MMHOMDS4B6098562071 |
| A | 609856.209.1 | 1/2" | MMHOMDS4L6098562091 | MMHOMDS4B6098562091 |

4 Valve Manifold - Type B - double isolate/vent block for applications where contamination of process streams and not permitted

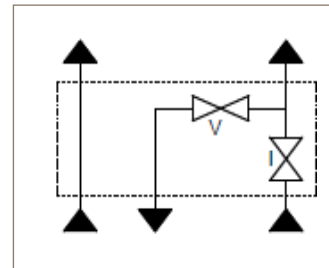
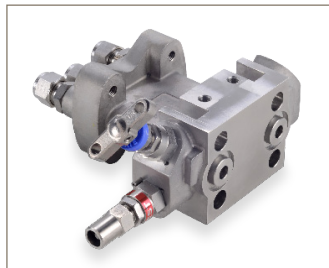
- Dual isolate and dual vent valves
- G1/4 BSPP female port supplied with either 3/8" OD or 10mm OD A-LOK®/CPI™ compression fittings fitted and pinned
- PTFE seal kit included as standard
- Graphite valve packing as standard



| Type | MESC | Process/Vent | A-LOK® Part Number | CPI™ Part Number |
|------|--------------|--------------|---------------------|---------------------|
| B | 609856.215.1 | 10 mm | MMHOMDS4L6098562151 | MMHOMDS4B6098562151 |
| B | 609856.217.1 | 3/8" | MMHOMDS4L6098562171 | MMHOMDS4B6098562171 |
| B | 609856.219.1 | 1/2" | MMHOMDS4L6098562191 | MMHOMDS4B6098562191 |

2 Valve Manifold - Type C - single isolate/vent block for pressure applications and level measurement on atmospheric tanks

- Single isolate and vent valve
- G1/4 BSPP female port supplied with either 3/8" OD or 10mm OD A-LOK®/CPI™ compression fittings fitted and pinned
- PTFE seal kit included as standard
- Graphite valve packing as standard

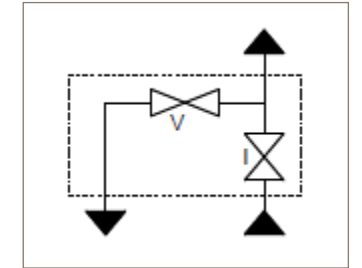
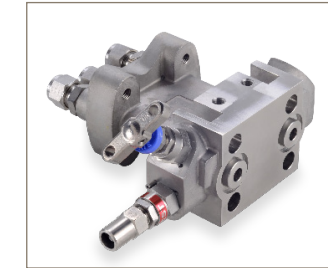


| Type | MESC | Process/Vent | A-LOK® Part Number | CPI™ Part Number |
|------|--------------|--------------|---------------------|---------------------|
| C | 609856.225.1 | 10 mm | MMHOMDS2L6098562251 | MMHOMDS2B6098562251 |
| C | 609856.227.1 | 3/8" | MMHOMDS2L6098562271 | MMHOMDS2B6098562271 |
| C | 609856.229.1 | 1/2" | MMHOMDS2L6098562291 | MMHOMDS2B6098562291 |

Key: I = Isolating E = Equalising V = Vent

2 Valve Manifold - Type D - single isolate/vent block for pressure transmitters of the differential body design

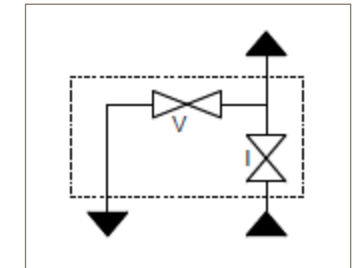
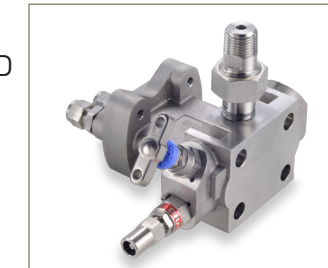
- Single isolate and vent valve
- G1/4" BSPP female port supplied with either 1/2" or 3/8" OD or 10mm OD A-LOK®/CPI™ compression fittings fitted and pinned
- PTFE seal kit included as standard
- Graphite valve packing as standard



| Type | MESC | Process/Vent | A-LOK® Part Number | CPI™ Part Number |
|------|--------------|--------------|---------------------|---------------------|
| D | 609856.235.1 | 10 mm | MMHOMDS2L6098562351 | MMHOMDS2B6098562351 |
| D | 609856.237.1 | 3/8" | MMHOMDS2L6098562371 | MMHOMDS2B6098562371 |
| D | 609856.239.1 | 1/2" | MMHOMDS2L6098562391 | MMHOMDS2B6098562391 |

2 Valve Manifold - Type E, F & G - single isolate/vent block for pressure transmitters

- Single isolate and vent
- G1/4 BSPP female port supplied with either 3/8" OD or 10mm OD A-LOK®/CPI™ compression fittings fitted and pinned



| Type | MESC | Process/Vent | A-LOK® Part Number | CPI™ Part Number | Outlet |
|------|--------------|--------------|---------------------|---------------------|-------------|
| E | 609856.305.1 | 10 mm | MMHOMLS2L6098563051 | MMHOMLS2B6098563051 | 1/2" NPT M |
| E | 609856.325.1 | 3/8" | MMHOMLS2L6098563251 | MMHOMLS2B6098563251 | 1/2" NPT M |
| E | 609856.345.1 | 1/2" | MMHOMLS2L6098563451 | MMHOMLS2B6098563451 | 1/2" NPT M |
| F | 609856.315.1 | 10 mm | MMHOMLS2L6098563151 | MMHOMLS2B6098563151 | 1/2" NPT F |
| F | 609856.335.1 | 3/8" | MMHOMLS2L6098563351 | MMHOMLS2B6098563351 | 1/2" NPT F |
| F | 609856.355.1 | 1/2" | MMHOMLS2L6098563551 | MMHOMLS2B6098563551 | 1/2" NPT F |
| G | 609856.317.1 | 10 mm | MMHOMLS2L6098563171 | MMHOMLS2B6098563171 | 1/2" BSPP F |
| G | 609856.337.1 | 3/8" | MMHOMLS2L6098563371 | MMHOMLS2B6098563371 | 1/2" BSPP F |
| G | 609856.357.1 | 1/2" | MMHOMLS2L6098563571 | MMHOMLS2B6098563571 | 1/2" BSPP F |

- Type E/F Outlet 1/2" NPT female manifold connection as standard fitted with swivel gauge adapter to above outlet options
- Type G Outlet 1/2" BSPP Female

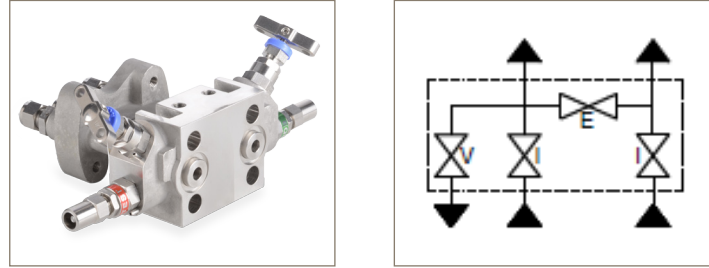
- Notes:
- Part numbers shown are manufactured from 316 stainless steel. Other materials on request
 - Direct mount interface in accordance with DIN 19213 PT2 1980 with 54mm (2 1/8") centers
 - Bolt material ASTM A193-B8 CL2, (7/16 bolts)
 - Cast manifold body ASTM A351/CF3M
 - Equalise and vent valves with anti-tamper feature as standard - keys should be ordered separately
 - Supplied with four M8 mounting plate screws and washers

Key: I = Isolating E = Equalising V = Vent

IEC 61518 Manifolds

4 Valve Manifold - Type A - double isolate/equalise/vent block for general applications

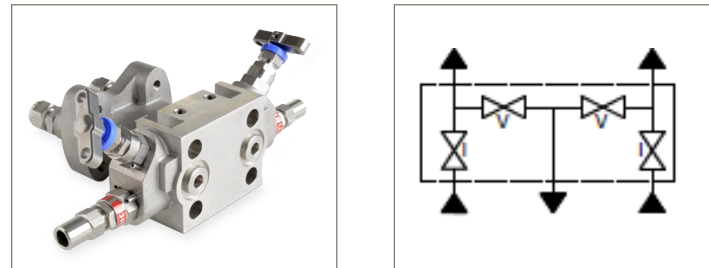
- IEC 61518:2001
- Dual isolate, equalise and vent valves
- G1/4" BSPP female port supplied with either 1/2" or 3/8" OD or 10mm OD A-LOK®/CPI™ compression fittings fitted and pinned
- Graphite seal kit included
- Graphite valve packing as standard



| Type | MESC | Process/Vent | A-LOK® Part Number | CPI™ Part Number |
|------|--------------|--------------|---------------------|---------------------|
| A | 609856.405.1 | 10 mm | MMHOMDS4L6098564051 | MMHOMDS4B6098564051 |
| A | 609856.407.1 | 3/8" | MMHOMDS4L6098564071 | MMHOMDS4B6098564071 |
| A | 609856.409.1 | 1/2" | MMHOMDS4L6098564091 | MMHOMDS4B6098564091 |

4 Valve Manifold - Type B - double isolate/vent block for applications where contamination of process streams and not permitted

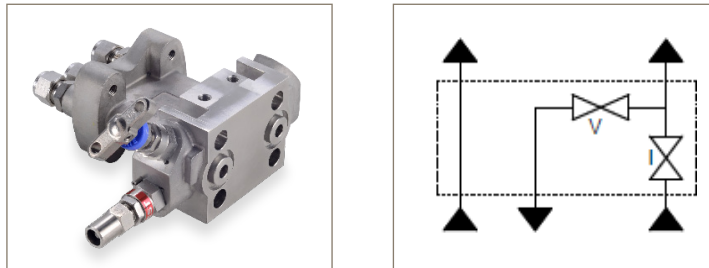
- IEC 61518:2001
- Dual isolate, equalise and vent valves
- G1/4" BSPP female port supplied with either 1/2" or 3/8" OD or 10mm OD A-LOK®/CPI™ compression fittings fitted and pinned
- Graphite seal kit included
- Graphite valve packing as standard



| Type | MESC | Process/Vent | A-LOK® Part Number | CPI™ Part Number |
|------|--------------|--------------|---------------------|---------------------|
| B | 609856.415.1 | 10 mm | MMHOMDS4L6098564151 | MMHOMDS4B6098564151 |
| B | 609856.417.1 | 3/8" | MMHOMDS4L6098564171 | MMHOMDS4B6098564171 |
| B | 609856.419.1 | 1/2" | MMHOMDS4L6098564191 | MMHOMDS4B6098564191 |

2 Valve Manifold - Type C - single isolate/vent block for pressure applications and level measurement on atmospheric tanks

- IEC 61518:2001
- Single isolate, equalise and vent valves
- G1/4" BSPP female port supplied with either 1/2" or 3/8" OD or 10mm OD A-LOK®/CPI™ compression fittings fitted and pinned
- Graphite seal kit included
- Graphite valve packing as standard



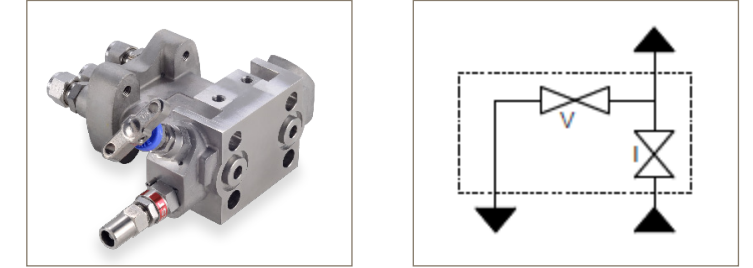
| Type | MESC | Process/Vent | A-LOK® Part Number | CPI™ Part Number |
|------|--------------|--------------|---------------------|---------------------|
| C | 609856.425.1 | 10 mm | MMHOMDS2L6098564251 | MMHOMDS2B6098564251 |
| C | 609856.427.1 | 3/8" | MMHOMDS2L6098564271 | MMHOMDS2B6098564271 |
| C | 609856.429.1 | 1/2" | MMHOMDS2L6098564291 | MMHOMDS2B6098564291 |

Key: I = Isolating E = Equalising V = Vent

IEC 61518 Manifolds

2 Valve Manifold - Type D - single isolate/vent block for pressure transmitters of the differential body design

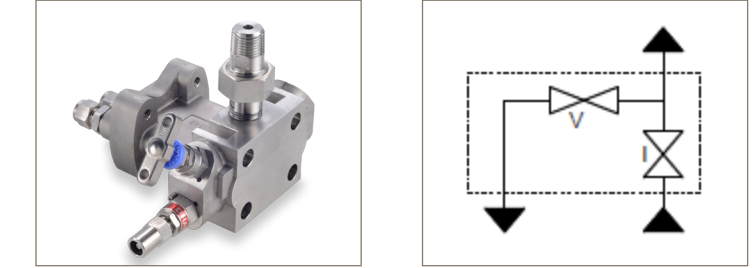
- IEC 61518:2001
- Single isolate, equalise and vent valves
- G1/4" BSPP female port supplied with either 1/2" or 3/8" OD or 10mm OD A-LOK®/CPI™ compression fittings fitted and pinned
- Graphite seal kit included
- Graphite valve packing as standard



| Type | MESC | Process/Vent | A-LOK® Part Number | CPI™ Part Number |
|------|--------------|--------------|---------------------|---------------------|
| D | 609856.435.1 | 10 mm | MMHOMDS2L6098564351 | MMHOMDS2B6098564351 |
| D | 609856.437.1 | 3/8" | MMHOMDS2L6098564371 | MMHOMDS2B6098564371 |
| D | 609856.439.1 | 1/2" | MMHOMDS2L6098564391 | MMHOMDS2B6098564391 |

2 Valve Manifold - Type E, F & G- single isolate/vent block for pressure transmitters

- IEC 61518:2001
- Single isolate and vent
- G1/4" BSPP female port supplied with either 1/2" or 3/8" OD or 10mm OD A-LOK®/CPI™ compression fittings fitted and pinned



| Type | MESC | Process/Vent | A-LOK® Part Number | CPI™ Part Number | Outlet |
|------|--------------|--------------|----------------------|---------------------|-------------|
| E | 609856.305.1 | 10 mm | MMHOMLS2L6098563051 | MMHOMLS2B6098563051 | 1/2" NPT M |
| E | 609856.325.1 | 3/8" | MMHOMLS2L6098563251 | MMHOMLS2B6098563251 | 1/2" NPT M |
| E | 609856.345.1 | 1/2" | MMHOMLS2L609856345.1 | MMHOMLS2B6098563451 | 1/2" NPT M |
| F | 609856.315.1 | 10 mm | MMHOMLS2L6098563151 | MMHOMLS2B6098563151 | 1/2" NPT F |
| F | 609856.335.1 | 3/8" | MMHOMLS2L6098563351 | MMHOMLS2B6098563351 | 1/2" NPT F |
| F | 609856.355.1 | 1/2" | MMHOMLS2L609856355.1 | MMHOMLS2B6098563551 | 1/2" NPT F |
| G | 609856.317.1 | 10 mm | MMHOMLS2L6098563171 | MMHOMLS2B6098563171 | 1/2" BSPP F |
| G | 609856.337.1 | 3/8" | MMHOMLS2L6098563371 | MMHOMLS2B6098563371 | 1/2" BSPP F |
| G | 609856.357.1 | 1/2" | MMHOMLS2L609856357.1 | MMHOMLS2B6098563571 | 1/2" BSPP F |

- Type E/F Outlet 1/2" NPT female manifold connection as standard fitted with swivel gauge adapter to above outlet options
- Type G Outlet 1/2" BSPP Female fitted with swivel gauge adapter

- Notes:
- Part numbers shown are manufactured from 316 stainless steel. Other materials on request
 - Direct mount interface in accordance with IEC 61518:2001 54mm (2 1/8") centers
 - Bolt material ASTM A193-B8 CL2, (7/16 bolts)
 - Cast manifold body ASTM A351/CF3M
 - Equalise and vent valves with anti-tamper feature - keys should be ordered separately
 - Supplied with four M8 mounting plate screws and washers

Key: I = Isolating E = Equalising V = Vent

Enclosure & Protective Shade

Enclosure

Often used in low temperature environments, the enclosure offers complete environmental protection of both the manifold and instrument body.

| Attribute | Value |
|----------------------------|--|
| Temp Range, Ambient | -30°C (22°F) to +85°C (185°F) |
| Material | Glass Fibre Polyester |
| Density, Material | 1.4 kg/dm ³ to 1.9 kg/dm ³ |
| Resistance, Ultra Violet | 1000 hrs Xenotest |
| Spec, Flame Retardant | DIN 4102 Class B1 |
| Conductivity, Thermal | 0.30 WM-1 K-1 |
| Strength, Bending | 85 N/mm ² |
| Strength, Impact | 20 kJ/m ² |
| Material, Seal | Hydrocarbon & Weather Resist |
| Material, Metal Parts | AISI 316 |
| Mandatory add requirements | MESC SPE 60.98.91/305 LV |
| Mounting | Direct to Mounting |

Protective Shade

The protective shade has been designed to protect the instrument from direct sunlight or heavy rain.

| Attribute | Value |
|----------------------------|--|
| Temp Range, Ambient | -30°C (22°F) to +85°C (185°F) |
| Material | Synthetic |
| Density, Material | 1.4 kg/dm ³ to 1.9 kg/dm ³ |
| Resistance, Ultra Violet | 1000 hrs Xenotest |
| Spec, Flame Retardant | DIN 4102 Class B1 |
| Strength, Bending | 85 N/mm ² |
| Strength, Impact | 20 kJ/m ² |
| Material, Metal Parts | AISI 316 |
| Mandatory add requirements | MESC SPE 60.98.91/205 LV |
| Mounting | Direct to Mounting |

| MESC | Description | Part Number |
|--------------|----------------------|-----------------------|
| 609891.205.1 | Protective Sun Shade | MMPA-SH-6098912051-L1 |
| 609891.305.1 | Enclosure | Contact Division* |

* **Note:** Please supply transmitter part number and manufacturer also specify liquid or gas service when ordering enclosures. To contact the division, please telephone 00 44 1271 313131, or email ipde_technical@parker.com



Back Plates

Product Description

Parker's range of back plates ensure the straightforward installation mounting of MESC-compliant manifolds with different accessories.

There are four types of back plates available, all featuring a clamp that allows easy mounting on a two-inch pipestand. The plates are made of 316 stainless steel.



| MESC | Description | Function | Part Number |
|--------------|---------------|---------------------------------------|--------------------|
| 609891.105.1 | Back Plate A1 | For protective shade & junction box | MMMP-6098911051-A1 |
| 609891.110.1 | Back Plate A2 | For protective shade w/o junction box | MMMP-6098911101-A2 |
| 609891.118.1 | Back Plate B1 | For protective shade & junction box | MMMP-6098911181-B1 |
| 609891.120.1 | Back Plate B2 | For protective shade w/o junction box | MMMP-6098911201-B2 |

Seal Pot and Purge Blocks

Seal Pot - Product Description

Parker's seal pot is designed for instrumentation systems requiring an open seal such as toxic, corrosive or high temperature service. An immiscible seal fluid is used with the seal pot. A barrier is formed in front of the manifold and instrument due to the difference in density to the process media.

Rating

Maximum working pressure: 413 bar (5990 psi) @ 38°C (100.4°F)
Maximum working temperature: 450°C (842°F)

Volume

Approx. 50 cm³



Placement

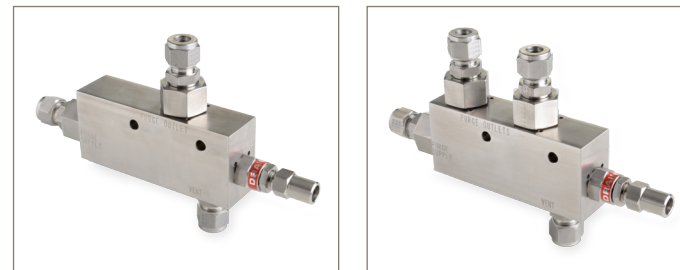
If the seal pot is located below the orifice plate, a seal fluid with higher specific gravity than the process medium is required.

If the seal pot is located above the orifice plate, a seal fluid with lower specific gravity is to be used.

| MESC | Description | Vent | A-LOK® Part Number | CPI™ Part Number |
|--------------|-------------|------|--------------------|--------------------|
| 609870.510.1 | Seal Pot | 10mm | MMHMSPSL6098705101 | MMHMSPSB6098705101 |
| 609870.600.1 | | 1/2" | MMHMSPSL6098706001 | MMHMSPSB6098706001 |
| 609870.610.1 | | 3/8" | MMHMSPSL6098706101 | MMHMSPSB6098706101 |

Purge Blocks - Product Description

Parker offer a choice of single and double vent and purge blocks for MESC-compliant manifolds. The single-vent is suitable for static pressure instrumentation applications. The double-vent is suitable for differential pressure applications, and is designed to connect to impulse lines on 54 mm (2 1/8") centres.



| MESC | Description | Vent | A-LOK® Part Number | CPI™ Part Number |
|--------------|-------------------------|------|--------------------|--------------------|
| 609870210.1 | Single Vent Purge Block | 10mm | MMVPBSSL6098702101 | MMVPBSSB6098702101 |
| 609870.310.1 | | 3/8" | MMVPBSSL6098703101 | MMVPBSSB6098703101 |
| 609870.220.1 | Double Vent Purge Block | 10mm | MMVPBDSL6098702201 | MMVPBDSB6098702201 |
| 609870.320.1 | | 3/8" | MMVPBDSL6098703201 | MMVPBDSB6098703201 |

Heating Blocks

Steam tracing and electrical heating blocks are available to provide frost protection or to maintain the process temperature of the media being measured. The blocks mount directly onto the manifold, providing a highly efficient conductive heat transfer to the manifold and transmitter body.

Steam Heating

A separate stainless steel steam block which mounts directly onto the manifold is used to provide steam heating.

Two G 1/4 female ports with tube fittings provide the connection to the steam line.



| MESC | Description | Vent | A-LOK® Part Number | CPI™ Part Number |
|--------------|---------------------|------|--------------------|------------------|
| 609870.010.1 | Steam Tracing Block | 10mm | MMSTBL6098700101 | MMSTBB6098700101 |
| 609870.110.1 | | 3/8" | MMSTBL6098701101 | MMSTBB6098701101 |

Electrical Heating

This aluminium block mounts directly onto the manifold to provide efficient conduction heating, with a self-limiting output characteristic. The block is supplied with a cable length of 1m.

| Attribute | Value |
|--------------------------|--------------------------------|
| Material | Aluminium, sea water resistant |
| Size | 90x40x30mm |
| Voltage | 110V - 265V |
| Rating | 50W |
| Type of Protection | IP68, NEMA 4X |
| Explosion Proof | II 2 GD EEx d IIC T4 |
| Certificate Number (PTB) | 02 ATEX 1116X |



| MESC | Description | Part Number |
|--------------|-------------------|-------------------|
| 609870.050.1 | Electrical Heater | Contact Division* |

* Note: Heating requirements can vary depending on service. To contact the division, please telephone 00 44 1271 313131, or email: ipde_technical@parker.com

Filling Connector and Port Protector

Filling Connector - Product Description

Parker's filling connector is available for use when purge protection is required but no purge block is installed. The purge medium flows through the instrument cavities allowing the system to be filled. It comes with an integral check valve.



Rating

Maximum working pressure: IEC - 413 bar (5990 psi) @ 38°C (100.4°F)
 Maximum working temperature: 200°C (392°F)
 DIN - 400BAR (5800PSI @ 38 (100.4°F)

| MESC | SEAL | Description | Part Number - DIN 19213 PT2 1980 |
|--------------|------|------------------------|----------------------------------|
| 609890.106.1 | PTFE | Filling Connector 6mm | MMHFCS-6098901061 |
| 609890.107.1 | PTFE | Filling Connector 1/4" | MMHFCS-6098901071 |
| 609890.307.1 | PTFE | Blind Flange | MMBLFG-6098903071 |

| MESC | SEAL | Description | Part Number -IEC 61518 |
|--------------|----------|------------------------|------------------------|
| 609890.406.1 | Graphite | Filling Connector 6mm | MMHFCS-6098904061 |
| 609890.407.1 | Graphite | Filling Connector 1/4" | MMHFCS-6098904071 |
| 609890.507.1 | Graphite | Blind Flange | MMBLFG-6098905071 |

Port Protector - Product Description

Parker's port protectors (mud dauber fittings) protect open ends of instruments, tubing, outlet vents, etc. The mesh wire screen prevents foreign bodies such as insects or debris from entering and clogging various systems and causing damage.



- Pipe plug, bored-through design
- 40 x 40 mesh .010 µm diameter wire screen
- Designed to vent female pipe, straights, elbows or tees

| Description | Connection | Part Number |
|-----------------------|---------------|-------------|
| Port Protector 316 SS | 1/4 NPT Male | 4MDF - SS |
| Port Protector 316 SS | 1/2 NPT Male | 8MDF - SS |
| Port Protector 316 SS | 1/4 BSPP Male | 4RMDF - SS |
| Port Protector 316 SS | 1/2 BSPP Male | 8RMDF - SS |

Quote Questionnaire

Information Required for Specifying an Enclosure System

Please provide the following details with your quotation request.

| Quote Questionnaire | | |
|---------------------|--|--|
| 1 | Item number | |
| 2 | Quantity | |
| 3 | Liquid or level | |
| 4 | Differential Pressure/Pressure Transmitter | |
| 5 | Material | |
| 6 | External design temperature | |
| 7 | Process temperature | |
| 8 | Transmitter reference | |
| 9 | Enclosure required | |
| 10 | Sun shade required | |
| 11 | A-LOK® or CPI™ | |
| 12 | Other comments | |



Fittings & Materials (Catalogue 4190-FMTG)

A complete guide to Parker IPDE's fittings, tubing and materials. Including tubing charts, anti corrosion information together with a comprehensive guide to the complete range of fittings



Process to Instrumentation Valves

- TAMAP 2 star ball or needle valve class A or class B
- Single block and bleed or double block and bleed
- Available in the following materials 316, Duplex or alloy 625
- A-LOK, CPI or BSPP connections
- Flange classes: 600 (covers 150, 300 and 600) class 2500 (covers 900, 1500 and 2500)



H Series Instrument Needle Valves (Catalogue 4190-HV)

- Compact needle valves
- For applications up to 10,000 psi (690 bar)
- Available with integral A-LOK® or CPI™ connections, reducing leak paths and reducing installation costs
- Soft tipped optional seating available for gaseous applications
- Fire safe option



HBV Series Instrument Ball Valves (Catalogue 4190-HBV)

- Suitable for the most demanding applications in the oil, gas and process control industries
- Integral compression ends available, eliminating taper threads and thread sealants
- Two piece barstock design reduces body leakage paths
- Complies with ANSI/ASME B16.34 requirements where applicable
- NACE MR-01-75/ISO 15156 compliant materials available
- Fire safe option



Parker Grade Tube (Catalogue 4190-PGT)

Parker's Instrument tube fittings have been engineered and manufactured to consistently provide high levels of reliability; no systems integrity is complete without considering the critical link - tubing

To contact the division please telephone 00 44 1271 313131 or email ipde_technical@parker.com

Parker Worldwide

Europe, Middle East, Africa

AE – United Arab Emirates,

Dubai
Tel: +971 4 8127100
parker.me@parker.com

AT – Austria, Wiener Neustadt

Tel: +43 (0)2622 23501-0
parker.austria@parker.com

AT – Eastern Europe, Wiener Neustadt

Tel: +43 (0)2622 23501 900
parker.easteurope@parker.com

AZ – Azerbaijan, Baku

Tel: +994 50 2233 458
parker.azerbaijan@parker.com

BE/LU – Belgium, Nivelles

Tel: +32 (0)67 280 900
parker.belgium@parker.com

BG – Bulgaria, Sofia

Tel: +359 2 980 1344
parker.bulgaria@parker.com

BY – Belarus, Minsk

Tel: +48 (0)22 573 24 00
parker.poland@parker.com

CH – Switzerland, Etoy

Tel: +41 (0)21 821 87 00
parker.switzerland@parker.com

CZ – Czech Republic, Klecany

Tel: +420 284 083 111
parker.czechrepublic@parker.com

DE – Germany, Kaarst

Tel: +49 (0)2131 4016 0
parker.germany@parker.com

DK – Denmark, Ballerup

Tel: +45 43 56 04 00
parker.denmark@parker.com

ES – Spain, Madrid

Tel: +34 902 330 001
parker.spain@parker.com

FI – Finland, Vantaa

Tel: +358 (0)20 753 2500
parker.finland@parker.com

FR – France, Contamine s/Arve

Tel: +33 (0)4 50 25 80 25
parker.france@parker.com

GR – Greece, Athens

Tel: +30 210 933 6450
parker.greece@parker.com

HU – Hungary, Budaörs

Tel: +36 23 885 470
parker.hungary@parker.com

IE – Ireland, Dublin

Tel: +353 (0)1 466 6370
parker.ireland@parker.com

IT – Italy, Corsico (MI)

Tel: +39 02 45 19 21
parker.italy@parker.com

KZ – Kazakhstan, Almaty

Tel: +7 7273 561 000
parker.easteurope@parker.com

NL – The Netherlands, Oldenzaal

Tel: +31 (0)541 585 000
parker.nl@parker.com

NO – Norway, Asker

Tel: +47 66 75 34 00
parker.norway@parker.com

PL – Poland, Warsaw

Tel: +48 (0)22 573 24 00
parker.poland@parker.com

PT – Portugal, Leca da Palmeira

Tel: +351 22 999 7360
parker.portugal@parker.com

RO – Romania, Bucharest

Tel: +40 21 252 1382
parker.romania@parker.com

RU – Russia, Moscow

Tel: +7 495 645-2156
parker.russia@parker.com

SE – Sweden, Spånga

Tel: +46 (0)8 59 79 50 00
parker.sweden@parker.com

SK – Slovakia, Banská Bystrica

Tel: +421 484 162 252
parker.slovakia@parker.com

SL – Slovenia, Novo Mesto

Tel: +386 7 337 6650
parker.slovenia@parker.com

TR – Turkey, Istanbul

Tel: +90 216 4997081
parker.turkey@parker.com

UA – Ukraine, Kiev

Tel: +48 (0)22 573 24 00
parker.poland@parker.com

UK – United Kingdom, Warwick

Tel: +44 (0)1926 317 878
parker.uk@parker.com

ZA – South Africa, Kempton Park

Tel: +27 (0)11 961 0700
parker.southafrica@parker.com

North America

CA – Canada, Milton, Ontario

Tel: +1 905 693 3000

US – USA, Cleveland

Tel: +1 216 896 3000

Asia Pacific

AU – Australia, Castle Hill

Tel: +61 (0)2-9634 7777

CN – China, Shanghai

Tel: +86 21 2899 5000

HK – Hong Kong

Tel: +852 2428 8008

IN – India, Mumbai

Tel: +91 22 6513 7081-85

JP – Japan, Tokyo

Tel: +81 (0)3 6408 3901

KR – South Korea, Seoul

Tel: +82 2 559 0400

MY – Malaysia, Shah Alam

Tel: +60 3 7849 0800

NZ – New Zealand, Mt Wellington

Tel: +64 9 574 1744

SG – Singapore

Tel: +65 6887 6300

TH – Thailand, Bangkok

Tel: +662 186 7000

TW – Taiwan, Taipei

Tel: +886 2 2298 8987

South America

AR – Argentina, Buenos Aires

Tel: +54 3327 44 4129

BR – Brazil, Sao Jose dos Campos

Tel: +55 800 727 5374

CL – Chile, Santiago

Tel: +56 2 623 1216

MX – Mexico, Toluca

Tel: +52 72 2275 4200

European Product Information Centre

Free phone: 00 800 27 27 5374

(from AT, BE, CH, CZ, DE, DK, EE, EI, ES, FI, FR, IT, NL, NO, PL, RU, SE, SK, UK, ZA)

© 2015 Parker Hannifin Corporation. All rights reserved

Parker Hannifin Manufacturing Ltd
Instrumentation Products Division Europe
Riverside Road
Pottington Business Park
Barnstaple, Devon, EX31 1NP
United Kingdom
Tel.: +44 (0) 1271 313131
Fax: +44 (0) 1271 373636
www.parker.com/mesc

Parker Hannifin Corporation
Instrumentation Products Division
1005 A Cleaner Way
Huntsville
Alabama
AL 35805
USA
Tel: + 1 (256) 881-2040
Fax: + 1 (256) 881-5072
www.parker.com/mesc

Catalogue: 4190-MESC

